

# BARON THREAT NET

When every minute counts, you'll only need a second to check the weather that impacts you most.



## Predict, Plan and Prepare

Baron Threat Net® is an essential tool for active monitoring and advanced preparation for all types of weather hazards. The solution incorporates three easy ways to track inclement weather. The web portal is a fully featured weather monitoring system that provides street level views and the ability to layer numerous data products. It also, provides simple custom alerts that track weather for locations you define and alert you on screen, via email or with push notifications to your phone. Plus, our companion app allows you to always have access to live real-time weather wherever you go.

## | Your Community, Your View

Monitor incoming meteorological threats like severe thunderstorms, winter storms, high winds and more on the county, city or town or street level. Baron Threat Net offers high-resolution, customizable mapping for the ultimate view of operational conditions that Emergency Managers need to focus on. Our user-friendly navigation allows you to point, click and save the data that matters most.

Baron Threat Net improves your ability to assess threats with a full-screen interactive mode that provides unmatched visualization. This feature allows you to quickly scan, monitor and investigate all severe weather on a single screen. We also give you the ability to access local radar, storm markers, winds and lightning.



**"We have the capability now to zoom in on our facility and to look at particular weather patterns or storm cells that we believe pose the greatest threat to us. We're able to communicate better information about the weather. That has saved us a lot of work and a lot of stress."**

*Jim Previtera, Senior Director of Security and Stadium Operations for the Tampa Bay Rays*

## | Easy to Interpret, Easy to React

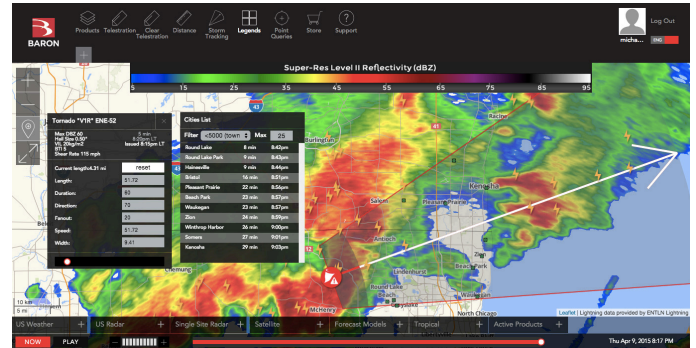
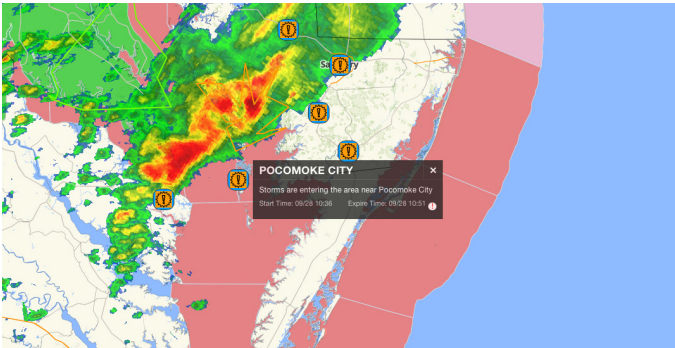
Nearly 80% of disasters faced by public safety and Emergency Management professionals are weather related. Are you prepared to interpret the weather science?

Your ability to analyze and interpret weather data is essential to protecting your community, and yet you probably didn't train to be a meteorologist. Accessible anytime and anywhere, Baron Threat Net delivers the critical weather intelligence you need in an easy-to-read format to help you make fast, informed and effective situational decisions – freeing you up to focus on keeping people and assets safe.

Easy customizable alerting ensures you are always notified of locations and assets in the path of impending weather. Our alerting includes patented Baron Safety Alerts and standard National Weather Service watches and warnings. You choose the location, identify the risk, and select the notification method and the system automatically and continuously monitors your locations

Baron Threat Net makes it easier to predict, plan and prepare for catastrophic events – whether natural or man-made. Our product provides current conditions and forecasts that give 24/7 accurate, detailed coverage based on a professional, proprietary weather system. Baron Threat Net lets you monitor a changing situation in real-time or up to 7 days out.

# Watch the Weather that Matters Most

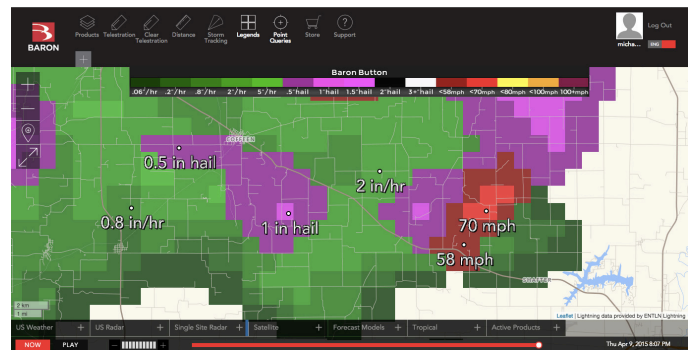
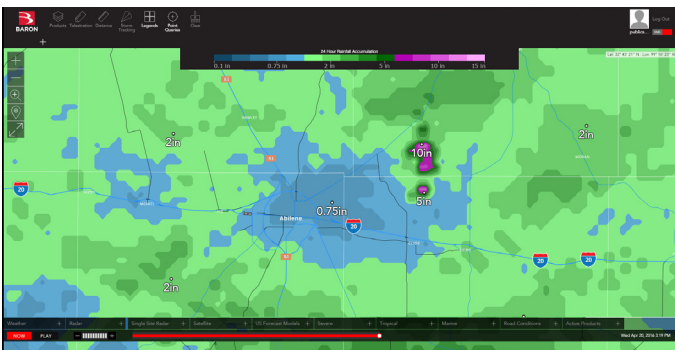


## Location-Based Alerts

An easy location-based alerting system allows you to monitor approaching weather for important locations and receive exclusive and patented Baron Safety Alerts and National Weather Service warnings. You will be notified right on the map, through text message or email on your mobile device or smart watch about specific threats headed your way. Notify the right people and locations ahead of time with pinpoint accuracy so they can prepare for disasters before tornadoes, flash floods or other threats reach key areas.

## Storm Tracking

Baron Threat Net's storm tracking tool shows you where the severe weather is, the direction it is heading, and an estimated time that it will reach locations in its path. Exclusive Critical Weather Indicators will also highlight the most likely location of tornado development, caused by dangerous wind shear or rotation in the atmosphere.



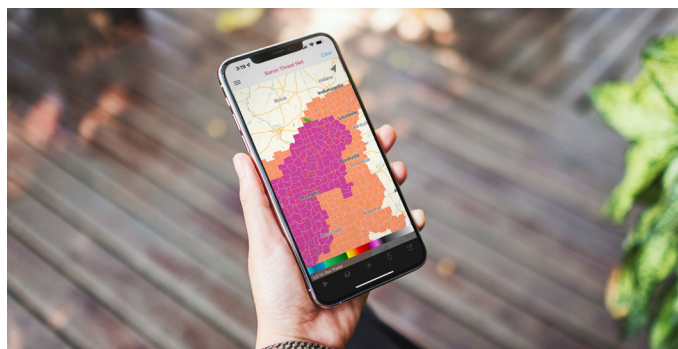
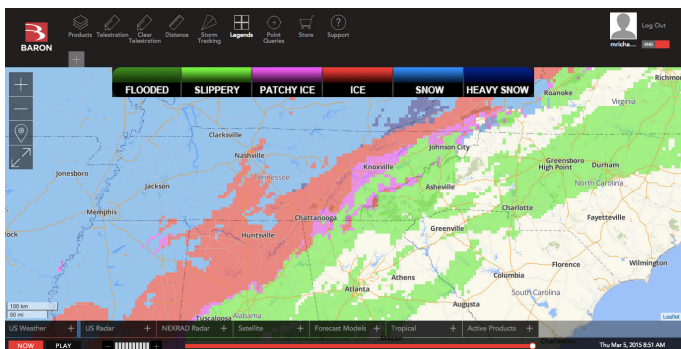
## Precipitation

How much rain was forecast? How much have you already received? How much do you expect to receive tomorrow? Stay on top of potential flooding risks with exclusive precipitation, accumulated precipitation and 24-hour Rainfall accumulation forecasts.

## Severe Threats

Outdoor sporting events, festivals and amusement parks can present particular Emergency Management challenges in severe weather. In addition to our precipitation features and several exclusive wind speed features, you'll want to monitor events using Baron Threat Net's Severe Threats feature, which lets you simultaneously see areas of probably damaging winds, hail and flooding. You can also monitor lightning with the Cloud to Ground Lightning feature, which displays real-time lightning strikes at street level if needed.





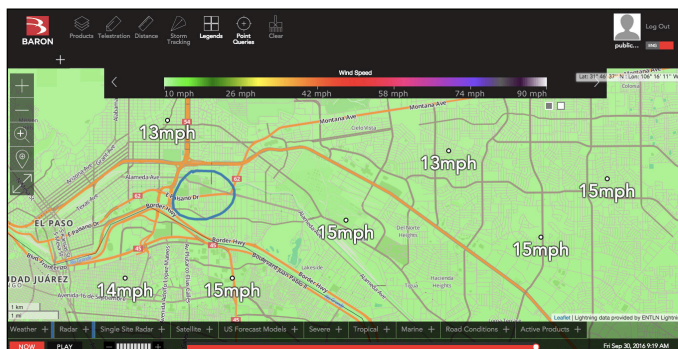
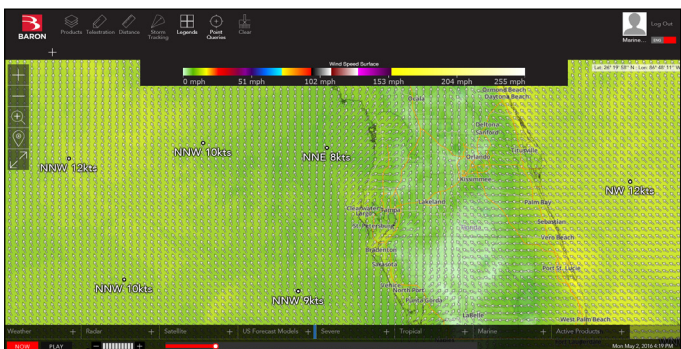
## Road Conditions

Snow, ice and fog can wreak havoc on a community's transportation system. Our Road Weather/Conditions product can display real-time road condition alerts that could impact driver safety. These include Flooded, Slippery, Patchy Ice, Ice, Snow and Heavy Snow. These alerts are based on a combination of real-time and forecasted products. Baron Threat Net also features a Visibility/Fog feature depicting areas of visibility of one mile or less. Traffic flow and incident data help solidify decisions around changing conditions. Live traffic cameras provide instant feedback for what's happening in the field.



## Intelligence On-the-Go

Access Baron Threat Net's life-saving weather information on your mobile device. The Baron Threat Net companion app for your iPhone or Android device is your go-to source for critical weather intelligence when life and property are on the line. No matter where you are, you can make mission-critical decisions with confidence.



## Hurricanes

If you're responsible for a community that finds itself on high alert during Hurricane season, Baron Threat Net helps you keep on top of tropical storms and hurricanes with a complete tropical weather package. Hurricane track forecasts along with other key maps — such as maximum wind speed, watches, warnings, and storm surge — are at your fingertips, and the latest text bulletins from the National Hurricane Center are just a click away.



## Beyond Mother Nature

Baron Threat Net can also help you with emergency situations that are not initially weather-related or that you can't predict, like HAZMAT disasters and terrorism. Trains and trucks carry a variety of hazardous and highly flammable materials through communities all over the United States every day. In the case of a spill or explosion, Baron Threat Net can help you determine wind and rain conditions that could spread spills, smoke, gases and more. It can also help determine the communities in the path of a potential hazard and prioritize notifications and evacuations.



[baronthreatnet.com](http://baronthreatnet.com)

[baronthreatnet.com/public-safety](http://baronthreatnet.com/public-safety)

P (256) 881-8811

©2022 Baron Weather, Inc. All rights reserved. Baron, the Baron logo, and Baron Lynx are registered trademarks of Baron Weather, Inc. Other trademarks are property of their respective owners. 07/2022